



COMPANY PROFILE



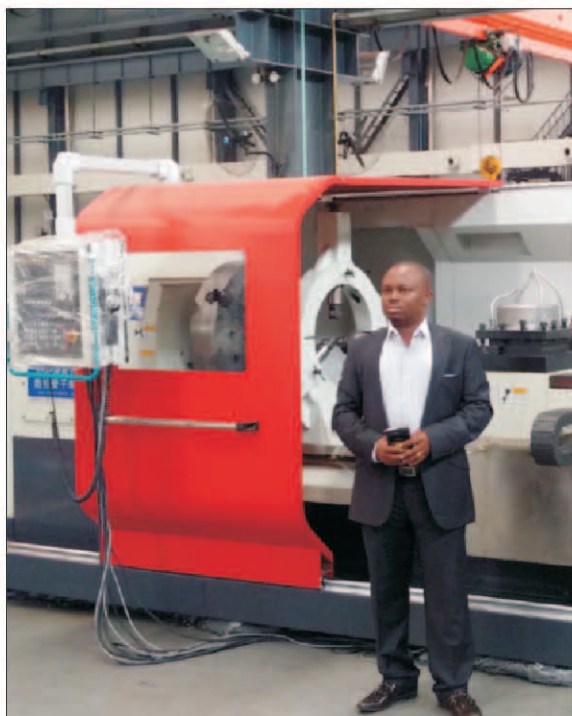
EVERPRAISE
TECHNOLOGIES LIMITED
(ENERGY, OIL & GAS SERVICES)

...redefining the essence of quality



▲ **ENGR. ITORO UDOFIA** (MNSE, MNIMechE)
Managing Director/Chief Executive Officer

“
The most important service we can provide is solving problems in collaboration with you innovatively and practically, from concept to completion.
”



EVERPRAISE TECHNOLOGIES LIMITED (ETL) is an Energy, Oil & Gas Services company established in 2013 to render top class services in the Oil & Gas Sector by redefining the essence of quality. ETL is registered in Nigeria with the Corporate Affairs Commission with RC No.:1145013.

The company is focused on meeting and exceeding customer requirements at all times by operating, a Quality Management System that is ISO 9001:2015 certified and complies with the requirements of API Specification Q1 . Performance inherently demands change, an axiom that Everpraise has always embraced. Today, our customers' needs are far broader in scope, their challenges more daunting than ever.

While Everpraise's products and services continue to meet industry standards, the most important service we can provide is solving problems in collaboration with you - innovatively and practically, from conception to completion.

The need for such a holistic approach is already understood by Everpraise. From upstream to downstream, we integrate products, systems, services and project management to add value to your process. We apply technologies to deliver real world results.

With performance at the forefront of everything we do, we are uniquely qualified to be your total solutions provider-whatever change may bring.

MISSION STATEMENT

MISSION

Everpraise Technologies Mission is to provide Engineering solutions to the Oil, Gas, Construction and Energy Industry through quality products and services.

VISION

Our Vision is to be a World Class Engineering Service provider and manufacturer to Energy, Oil & Gas Industry, with the aim of building a team with the highest standard of Professionalism, Ethics, quality and unbeatable customer service delivery.

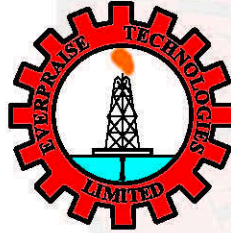
VALUES

Proficiency, Quality, Reliability and Honesty are our watchwords. These are the yard sticks on which our Company is built.



COMPANY INFORMATION

Company Name
EVERPRAISE TECHNOLOGIES LIMITED



Incorporation Number
RC: 1145013

Corporate Symbol
ETL

Corporate Status
Limited Liability Company

Corporate Office

KM 17 PH/Aba Expressway, off Boskel Road,
Eledenwo Industrial Area, Port Harcourt,
Rivers State, Nigeria.

Tel: +2348037715364, +2348090607797

E-mail: info@everpraisetechologies.com,
everpraise2003@yahoo.com

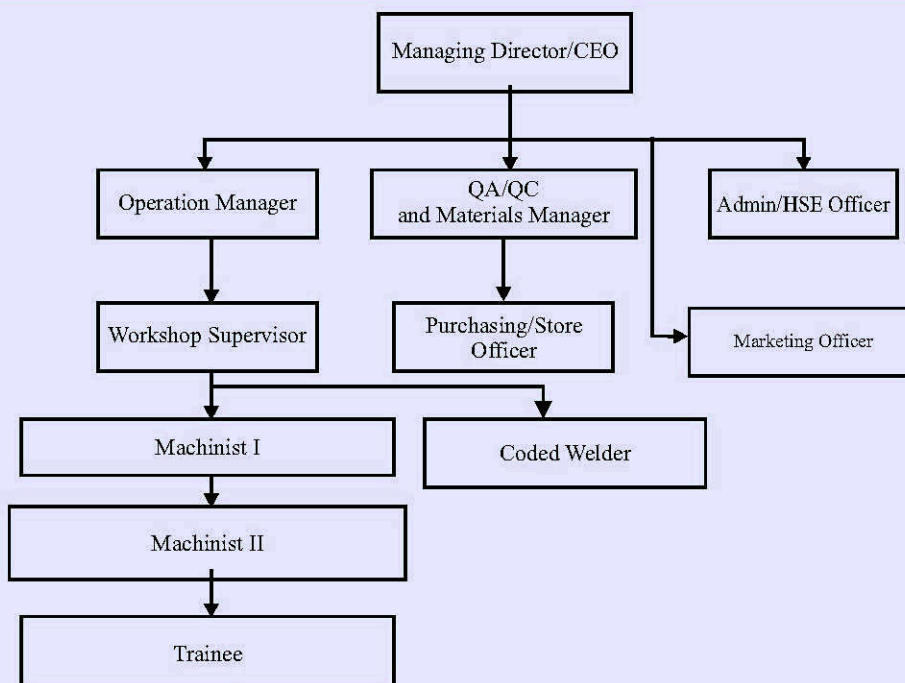
Website: www.everpraisetechologies.com.

USA Office:

11316 Jollyville Road, #246 Austin TX 78759

Phone: (512) 767-0616

ORGANIZATION CHART



QUALITY POLICY

EVERPRAISE TECHNOLOGIES LIMITED is committed to providing products and services that meet customer, statutory and applicable regulatory requirements. The company is committed to enhancing customer satisfaction through the effective application of the Quality Management System, and continual improvement of the effectiveness of the system and processes.

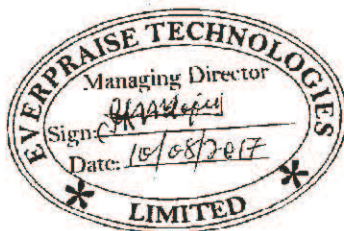
This is achieved through :

- An efficient management system.
- Highly competent personnel with clear lines of responsibility.
- Setting clear and measurable quality objectives and goals for continuous improvement.
- Use of appropriate equipment , tools and materials.
- Use of efficient work methods, procedures and processes.
- High degree of quality control.

Our quality Management System meets the requirements of ISO 9001:2015.

The management of the Company is committed to this policy and strives to ensure that it is communicated, understood, implemented and maintained at all levels and functions of the organization and is periodically reviewed for continuing suitability.

Engr. Itoro Udofia



ISO CERTIFICATE



STANDARDS ORGANISATION OF NIGERIA

Certificate

No. 0000537

This is to certify conformity of

EVERPRAISE TECHNOLOGIES LIMITED

Organisation/Person

PORT HARCOURT

Location

Quality Management System

With

ISO 9001:2015

Specification/Standard

For

**GENERAL MACHINE SHOP SERVICE; MANUFACTURERS OF CROSS-OVERS, FLANGES AND OTHER
OIL TOOLS THREADING OF ALL API CONNECTIONS, WELDING AND FABRICATION SERVICES**

Scope

Issued on 20.02.2018

Expires on 19.02.2021



A handwritten signature in red ink, appearing to be 'C. Ab', located above the title of the Director General.

DIRECTOR GENERAL/CHIEF EXECUTIVE
STANDARDS ORGANISATION OF NIGERIA

OUR FOUR INITIATIVES

TO SUSTAIN ECONOMIC GROWTH:

Everpraise is working hard to achieve a global leadership position. Applying any metric, we are demonstrating consistent growth - from our financial performance, to our employee numbers, to our positive economic impact on the communities in which we do business. While expanding globally, we simultaneously invest locally in a multitude of countries worldwide.

TO BUILD OUR COMMUNITIES:

We are actively and globally involved in a duality of community: our employees, and our neighbors. Everpraise is the company it is today due in large part to our commitment to fair hiring practices and non discrimination. Our efforts to promote community include Technology Partnering, Volunteerism and Financial Support.

TO PROTECT HEALTH & SAFETY:

We integrate the practices, standards and goals of our HSE Policy into our global business plans and our everyday job responsibilities for effective implementation. Everpraise's pledge to health & safety is articulated simply: No one gets hurt. Nothing gets harmed.

TO PRESERVE OUR ENVIRONMENT:

Integral to Everpraise's commitment to operational excellence is our unwavering commitment to eco-efficiency in product stewardship and eco-awareness of the impact our operations have on the environment. We make progress each day, and our pursuit of making measurable differences is a priority in everything we do.

ETL staff are competent and qualified by way of education, training and experience to execute jobs for our numerous clients. Our staff include the following:

- Engineers
- API Machinists for threading Rotary Shouldered Connections, Casing and Tubing
- Precision Machinists for machining all kinds of parts and components
- QA/QC Engineers and Technicians
- ASNT Level II Inspectors
- ABS Coded Welders and Fitters

OUR SERVICES

- Machine Shop Services
- Oil/Drilling Tools Manufacturing and Repairs
- Xmas Tree & Wellhead Modification
- Welding & Fabrication
- Threading of API Connection & Crossovers
- Flange Manufacturing
- Manufacturing of Lubricators
- Onshore/Offshore Machining
- Equipment & Tool Design
- Equipment Maintenance
- Cold Cutting Services
- Quality Control & Dimensional Inspections
- Machining of Teflon & Metal Drift
- Man-Power Supply

Everpraise API machinist working on big hollow oil country lathe



EVERPRAISE TECHNOLOGIES LIMITED HAS AN ARRAY OF MACHINE TOOLS: LATHES, MILLING MACHINES, DRILLING MACHINES, ETC FOR ALL TYPES AND SIZES OF MACHINING JOBS

AN ARRAY OF MACHINE TOOLS



THREADING OF CASING PIPES USING SEMI AUTOMATIC OIL COUNTRY LATHE



A MACHINIST WORKING ON API OIL COUNTRY LATHE

AN ARRAY OF MACHINE TOOLS



THREADING ON MONEL



ARRAY OF SEMI-AUTOMATIC LATHE



BAND SAW WITH 500MM CUTTING CAPACITY



AUTOMATIC SURFACE GRINDING MACHINE



TEST-RUNNING OF NEWLY INSTALLED SEMI AUTOMATIC OIL COUNTRY LATHE BY EVERPRAISE ENGINEERS AND TECHNICIANS



RADIAL DRILLING MACHINE

Everpraise Technologies is committed to the establishment and maintenance of the quality performance standards to ensure the supply of quality products which will conform to API 6A, 5CT, 7-1 and Q1 specifications.

Everpraise Technologies Limited engages in Tubular and Dimensional Inspection of Oil & gas Equipment for conformity with International Standards. We have an array of gauges such as MRP Pitch Diameter and Quality gauge, Taper Gauge, Lead Gauge, Runout Gauge, Ball Gauge, Calipers, Micrometers, etc. All gauges are periodically calibrated.



LEAD MEASUREMENT ON A TUBULAR JOINT



QUALITY CHECK



CHECKING BALL READING ON FLANGE

The Quality Assurance Department is responsible for implementing and maintaining the overall Quality Plan and for providing metallurgical expertise in welding, heat treatment, and materials for Everpraise Technologies.

The Quality Plan emphasizes the prevention of conditions adverse to quality and assures prompt detection and correction of any deficiency encountered. The control processes and/or operations are accomplished through the use of essential documents such as Work Orders and Process/Travellers which detail operational steps such as machining and drilling, and quality functions to be completed such as non-destructive testing, welding inspection.



CHECKING THREAD PROFILE ON A TUBULAR JOINT

MACHINE SHOP SERVICES

Our core business is Machine Shop Services. Everpraise Technologies has an array of automatic and semi-automatic lathe machines, drilling machines and other machines tools to execute all kinds of precision machining jobs. Machine parts and components are precisely machined to the specifications and requirements of customers.



THREADING 9 1/2" NMDC



SLOTING OF INTERNAL SPLINES BY EVERPRAISE MACHINISTS ON A UNIVERSAL MILLING MACHINE



DRILLING OF BLIND FLANGE ON RADIAL DRILLING MACHINE



FINISHED PRODUCT OF FLANGE CROSSOVERS AND OTHERS



FINISHED PRODUCT OF MACHINE COMPONENTS



MANUFACTURING OF UBHO SLEEVE



CUTTING OF GEARS

THREADING OF OIL COUNTRY TUBULAR GOODS (OCTG) AND ROTARY SHOULDERS CONNECTIONS

Everpraise Technologies Limited threads all connections on Casing, Tubings and cross overs for a wide range of Oil & Gas applications. The connections are threaded as per international standard, sample(s) and instructions provided by the client.



STABILIZER RETHREADING AND REDRESSING



EVERPRAISE TECHNOLOGIES, MACHINES OF FLANGE FOR SUBSEA XMAS TREE



MANUFACTURING OF 135/8" - 5K BY 11" - 5K RISER SPOOL

FLANGE MANUFACTURING

Everpraise Technologies manufactures flanges to API, ASME and JIS Standards. Special flanges are also manufactured as per customer requirement(s) and sample(s). Our Capability on flanges also include repair and recertification of old flanges and flanged components

- Worn out flange are built up by welding and machined to specification
- Flange re-facing
- Flange re-grooving, including coating with stainless (by welding)
- Pressure testing and re-certification



MANUFACTURING OF 135/8" - 5K TOP & BOTTOM RISER SPOOL

FABRICATION SERVICES

Our fabrication services cover a wide range of tools. These tools are either custom fabricated or fabricated to the required International standards and codes such as API and ASME.

- Custom Fabrication
- Fabrication of Specialist Tools for Drilling and Completions,
- Fabrication of Cross Overs with Weco Connections
- Cargo Carrying Units
- Tanks, Toolboxes



WELDING OF CASING ON CASING HEAD HOUSING



ON-GOING FABRICATION OF DETACHABLE GANTRY



FABRICATION OF DETACHABLE A-FRAME GANTRY FOR EXXON MOBIL

FABRICATION SERVICES



FABRICATION OF BOP TEST STUMP WITH PULL BAR



WELDING OF 30"X1" CONDUCTOR PIPES AND CONNECTORS



FABRICATION OF SPLIT-TYPE BASE
PLATE LANDING RING



FINISHED PRODUCT OF SPLIT-TYPE BASE
PLATE LANDING RING

Everpraise Technologies Ltd has the capacity to successfully execute projects in the Nigerian Oil and Gas industry.

The company has shown itself able to handle projects in the production facilities operations and maintenance, inspection, procurement and manpower categories as well as render consultancy services to services companies in the industry as part of its local content development



Everpraise Technologies Limited do inspect equipment and components right in the field to determine the level of damage, and what machining, repair, rehabilitation or modification works to be done either at site or in the workshop.



SITE INSPECTION OF WELLHEAD FOR MODIFICATION

Our staff are experienced Design Engineers expertly and expeditiously resolves unique customer application problems, design requirements, the creation of new designs, or the accommodation of unique designs as applicable to wellhead equipment and valves.



All machine operators are required to dimensionally inspect their works randomly during the manufacturing process. The Quality Control Department performs incoming, in-process and final Inspection of parts/products manufactured to API and Internal standards. Incoming machined parts from subcontractors are held and inspected by Quality Control.

At Everpraise Technologies, we know our leadership demands responsibility. Through Everpraise's Corporate Responsibility, we apply our values in ways we can be proud of that impact our people, our business, our society and our planet. That means meeting customer and market demands responsibly as we operate and grow our business - always with an eye toward the sustainable creation of positive change, exceptional performance and lasting value.



OFFSHORE VISIT AFTER MODIFICATION OF XMAS TREE AT SHEBAH E&P PLATFORM



NEW ESP PORT CREATED ON CAMERON XMAS TREE BY EVERPRAISE



MACHINING ESP PENETRATOR ON XMAS TREE



EVERPRAISE MACHINIST MACHINING THE XMAS TREE



CLIENT INSPECTION ON MODIFIED CAMERON XMAS TREE AT EVERPRAISE FACILITY

FIELD/SITE INSPECTION / JOBS DONE BY EVERPRAISE TECHNOLOGIES LIMITED



ANOTHER FLOW LINE INSTALLED BY EVERPRAISE



COMPLETE INSTALLATION OF FLOW LINE TO EXISTING HEADER



EVERPRAISE ENGINEER AND WELDERS, WELDING A TEE PIECE AT UKPOKITI OFFSHORE



EVERPRAISE WELDER ON FLOW LINE PROJECT OFFSHORE



EVERPRAISE ENGINEERS AND TECHNICIANS AT UKPOKITI OFFSHORE



FINAL FABRICATION ON FLOW LINE AT UKPOKITI OFFSHORE



FLOW LINE SPOOL PIECE TIED TO XMAS TREE GATE VALVE



INSTALLATION OF FLOW METER AND THERMOWELL ON THE FABRICATION FLOW LINE BY EVERPRAISE



INSTALLATION OF NEW FLOW LINE ON THE EXISTING MANIFOLD BY EVERPRAISE ENGINEER AT UKPOKITI OFFSHORE



INSTALLATION OF FLOW LINE IN PROGRESS BY EVERPRAISE ENGINEER AT UKPOKITI OFFSHORE



NEW FLOW LINE INSTALLED BY EVERPRAISE ENGINEER AT UKPOKITI OFFSHORE



PRE-FABRICATION OF FLOW LINE IN EVERPRAISE BASE AT UKPOKITI OFFSHORE



DUMMY TEST CARRIED OUT BY SCHLUMBERGER ENGINEERS ON XMAS TREE AND TUBING SPOOL MODIFICATION



WELDING OF FLOW LINE AT UKPOKITI OFFSHORE



SUCCESSFUL SIT ON MODIFIED XMAS TREE & TUBING SPOOL AT EVERPRAISE FACILITY

We are specialists on modification and rehabilitation of obsolete Xmas trees and wellheads, resulting in savings for our customers.



MODIFICATION OF RISER SPOOL



MODIFICATION OF XMASS TREE BONNET



MANUFACTURING OF 13-5/8" 5K FLANGE X 4^{1/2}" IF BOX CONNECTION



MODIFICATION OF XMASS TREE ADAPTER WITH ESP TEMPERATURE GAUGE HOLES

MODIFIED PORT HOLES

JOBS DONE BY EVERPRAISE TECHNOLOGIES LIMITED



LUBRICATOR MANUFACTURED BY EVERPRAISE



MANUFACTURED SIDE-DOOR AND NORMAL LUBRICATOR. EVERPRAISE LUBRICATOR IS CLASSIFIED "THE BEST"



MANUFACTURED TREE TOP CONNECTIONS AND SEGMENTED FLANGES



MANUFACTURED HUB WITH WECO CONNECTIONS, ACME CROSS OVERS AND TREE TOP CONNECTION WITH HAMMER UNIONS



MANUFACTURED RISER SPOOL (135g" - 5K TOP & BOTTOM)



TEST FLANGES READY FOR SHIPMENT



MANUFACTURED GATES AND SEATS FOR GATE VALVES



MANUFACTURED TEST FLANGES



MANUFACTURED CROSS OVER SUBS



MUD MOTOR POSITIONING TOOL



FLANGE BY WECO FEMALE CROSSOVER



WEAR BUSHING



MANUFACTURED LIFTING SUBS



ACTUATOR COMPONENTS



MANUFACTURED PARAFFIN CUTTERS

... A HIGHLY EXPERIENCED TEAM OF PROFESSIONALS

A highly motivated and skilled workforce and a consistent management approach are key factors behind EVERPRAISE's success. Keeping our people healthy and motivated is central to our daily work.

Every year EVERPRAISE invests heavily in occupational health programmes and staff training schemes. We give prominence to measures aimed at improving workplace safety and have implemented a raft of employee health projects over the years. Equal opportunities, integration and diversity play a vital role in EVERPRAISE's corporate philosophy.

The company has employees from different part of the states of Nigeria and all of them are treated equally in terms of pay and career opportunities regardless of their gender, religion, cultural background and ethnicity. Flexible, personalised working time models give our people the space they need to develop.



Second from left Everpraise MD with Notore Technical Team, during a site visit @ Everpraise Facility



Graduation ceremony of Engineers/Technicians Trainees, Trained by Everpraise in Partnership with NAOC, NCDMB and Union Energy



The HSE system of Everpraise Technologies Limited (ETL) places great importance on Health, Safety, Security and Environment. The company has set goal zero accident and incident targets and is dedicated to protecting its people and eliminating the risk of damage to machinery and environment. To ensure that goal zero HSSE targets and objectives are met, ETL is committed to:

- Providing adequate control of the health and safety risks arising from our operations.
- Ensuring the safety and security of its employees, subcontractors and members of the public who may be affected by our activities, at all times
- Providing and maintaining equipment, plant and machinery in safe and good working conditions
- Preventing accidents and cases of work-related ill health
- Minimizing the impact of its activities on the environment
- Ensuring safe handling and use of chemicals and other substances
- Ensuring all employees are competent to execute their tasks by giving them regular and adequate HSSE training and orientation.
- To consult with our employees on matters affecting their health and safety; The company is well committed to this policy and will ensure that it is fully implemented and continually improved on by ensuring periodic reviews and revisions of this policy.

Everpraise Technologies Ltd (ETL) being a good corporate body shall as a matter of policy co-operate with its host communities in all aspects that will ensure a conducive atmosphere for the safe execution of projects. To promote cordial relationship with host communities, the following policies will be pursued:

- At least 60% of employment of unskilled labor (particularly casual labor) for the execution of any project is exclusively reserved for indigence of the host community where applicable.
- Indigenes are to be given primary consideration in the award of sub-contract jobs particularly where capable companies exist in the host community.
- The company shall conduct all its operations in such a manner so as not to pose any environmental threat to the host community.
- In event of any damage, the company shall pay adequate compensation as shall be agreed with the host community.
- In all matters, the company shall dialogue with legitimate representatives of the host community to promote mutual trust and benefits.
- The public relations department shall remain open to the host community.
- The company shall recognize the leadership or the traditional ruling institution of the host community.
- The company shall not be involved in the local politics of the host community.
- The company shall within its limited resources assist in the developmental efforts of the host community.

PROCEDURE ON COMMUNITY RELATIONS

The HSSE department handles community relation matters. The HSSE COORDINATOR will visit host communities quarterly and in addition; officers of the department will do more frequent visits. In line with the above policy statements, the following procedures shall be adhered:

- Before mobilizing personnel and materials to any project site, a community relations delegation with the HSSE coordinator as leader of the delegation shall visit prospective host community to introduce the company to the community.
- Declare the mission of the company and the importance of the project to the host community.
- To seek the views, request, and reception or otherwise of the host community.

To seek cooperation with the host community.

NIGERIAN CONTENT POLICY

It is everpraise Technologies Limited(ETL)

policy to maintain and uphold Nigerian Content in every area of it's operations.

This policy is guided by the principle of equity and fairness.

The thrust of this policy is to promote the Nigerian enterprise, drive initiative as a varitable vehicle of national development.

ETL as wholly indigenous company will give "First Consideration" to Nigerian goods and services, ensure that in all areas of it's operation, Nigerian input is allowed and accepted within the operation activities of the company.

This policy ensures that Nigerian are given the opportunity to participate effectively in every area of our project execution. that Nigerian initiatives and contributions areas of articulating and service delivery is recognized.



Engr. Itoro Udofia



SOME OF OUR CLIENTS



Shell Nigeria E&P Coy



Gonnamok Integrated Services Ltd.



Segofs Energy Services Ltd



Midwestern Oil & Gas Company Limited



Halliburton



Schlumberger Nigeria Ltd.



A Schlumberger Company

CAMERON-A SCHLUMBERGER COMPANY



NRG Drilling Nigeria Ltd./
Well Smart Drilling



Union Energy Services Ltd.



OIS INDORAMA PORT LTD.

Notore

Notore Chemical Ind. Ltd.



rick services

Rick International Services Ltd.



TOTAL

Total E&P Nigeria Ltd.

- SHEBAH EXPLORATION & PRODUCTION LTD.
- SEPLAT PETROLEUM
- KENYON INTERNATIONAL WEST AFRICA LTD.
- OWEISS
- MOSH ENERGY
- DRILOG PETRO-DYNAMICS LTD.
- PRUDENTIAL CONCERNS LTD.
- NATIONAL OILWELL VARCO (NOV)
- UNITECH DRILLING COMPANY
- GEOPLEX DRILLTEQ LTD.
- DIVINE FLAME & ENERGY INT'L LTD.
- DRILLOG PETRO-DYNAMICS LTD.



EVERPRAISE TECHNOLOGIES LTD.

Corporate Office
Plot 280 Trans-Amadi Industrial Layout,
Beside Trans-Amadi Post Office, Port Harcourt,
Rivers State, Nigeria.

USA OFFICE:
11316 Jollyville Road #246
Austin TX 78759
Phone: (512) 767-0616

Mobile: +2348037715364, +2348090607797
E-mail: info@everpraisetechologies.com, everpraise2003@yahoo.com
Website: www.everpraisetechologies.com.